



INTERNATIONAL CENTRE  
FOR PENSION MANAGEMENT



## ICPM-Rotman Pension Governance Education Program



### PROGRAM INFORMATION

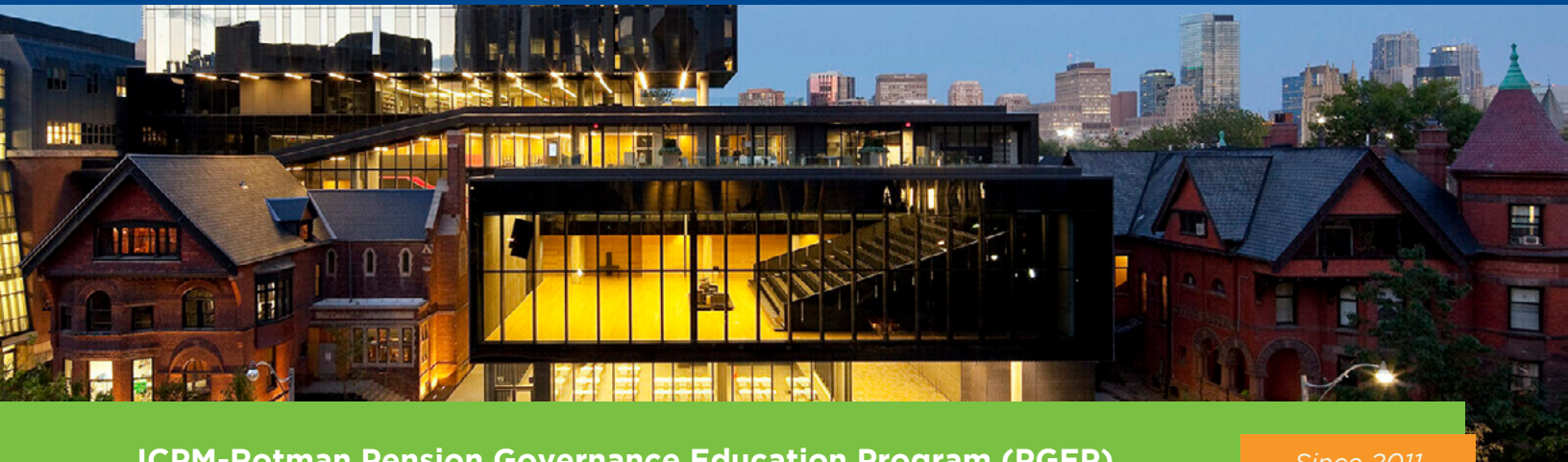


**October 7-10, 2025**

Rotman School of Management, University of Toronto

[www.icpmnetwork.com/education](http://www.icpmnetwork.com/education)

**Rotman**



## ICPM-Rotman Pension Governance Education Program (PGEP)

Since 2011

### PGEP returns October 2025

ICPM and the University of Toronto's Rotman School of Management Executive Programs have designed a unique international board governance program that is specifically targeted to Board members and trustees of pension and other long-horizon investment institutions: the **Pension Governance Education Program (PGEP)**.

Joining returning Academic Co-Director **Judy Payne**, we welcome **Mike Simutin** as an Academic Co-Director of this year's PGEP. Judy brings a practitioner focus to the program, with 25 years of working with pension boards, including as a senior executive officer and more recently as a trustee and board chair. Mike, Associate Director of Research at ICPM, is also a Professor of Finance at the Rotman School of Management and has worked closely with pension practitioners through these roles.

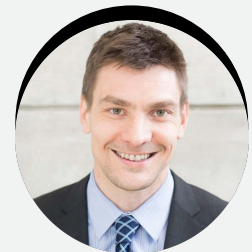


*"Boards and trustees of pension funds from around the world are facing many of the same challenges. PGEP provides a valuable opportunity to learn from the international community, understand different approaches, and gain fresh perspectives from peers at other organizations."*

**Judy Payne**  
PGEP Academic Co-Director

*"PGEP provides a unique setting for pension boards and trustees to stay apprised of the latest ideas and best practices by interacting with leading academia and board peers from around the world."*

**Mike Simutin**  
Professor of Finance, Rotman School of Management & PGEP Academic Co-Director



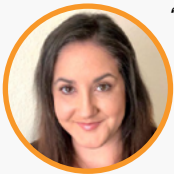
The **3.5 day curriculum** will be led by a high-quality team of top academics and renowned practitioners. Content reflects the top priorities and challenges facing Board members and trustees of long-horizon investment institutions today.

Networking events, case studies, group discussions and team assignments ensure dynamic interactions among participants throughout the program, which foster global pension sector contacts that remain long after the program.

**Consider integrating the PGEP as a valuable step for your incoming Board or Committee chairs.**

### Key strategic areas

- Global challenges facing pensions
- Good governance of pension organizations and investments
- Boardroom dynamics
- Responsible investment
- Public and private investments
- IT and cybersecurity risk
- Effective member communications
- Outreach and Advocacy



*“The program’s content is not only informative but also highly practical, equipping me with the skills and insights necessary to excel in my role as a pension fund trustee. The program also fosters a strong sense of community among its participants, allowing for valuable networking and knowledge-*

*sharing opportunities. I highly recommend this program to anyone looking to enhance their understanding of pension governance and stay at the forefront of this ever-evolving industry. The ICPM PGEP is an investment in your professional development that will pay dividends for years to come.”*

**Mullissa Willette**  
Board Member, CalPERS



*“Sharing of our different country perspectives in pension fund designs and administration helped me to enhance my own understanding of possibilities that exist in future pension designs and management. I hope to use both the knowledge and skills gained*

*in the program to add value to our pension fund’s management processes.”*

**Zethu Msindo**  
Board Member, GEPP

**Registration is open** | Space limited to 35 participants

**Register now**



#### Date

October 7-10, 2025



#### Location

Rotman School of Management  
University of Toronto, Canada



#### Fee

CDN \$8,880 + tax until July 1, 2025  
CDN \$9,380 + tax as of July 2, 2025  
*Excluding all travel and hotel arrangements.*



#### Discount for ICPM Research Partners

Enroll in PGEP only and **save 15%**

For more information: [icpm@icpmnetwork.com](mailto:icpm@icpmnetwork.com)